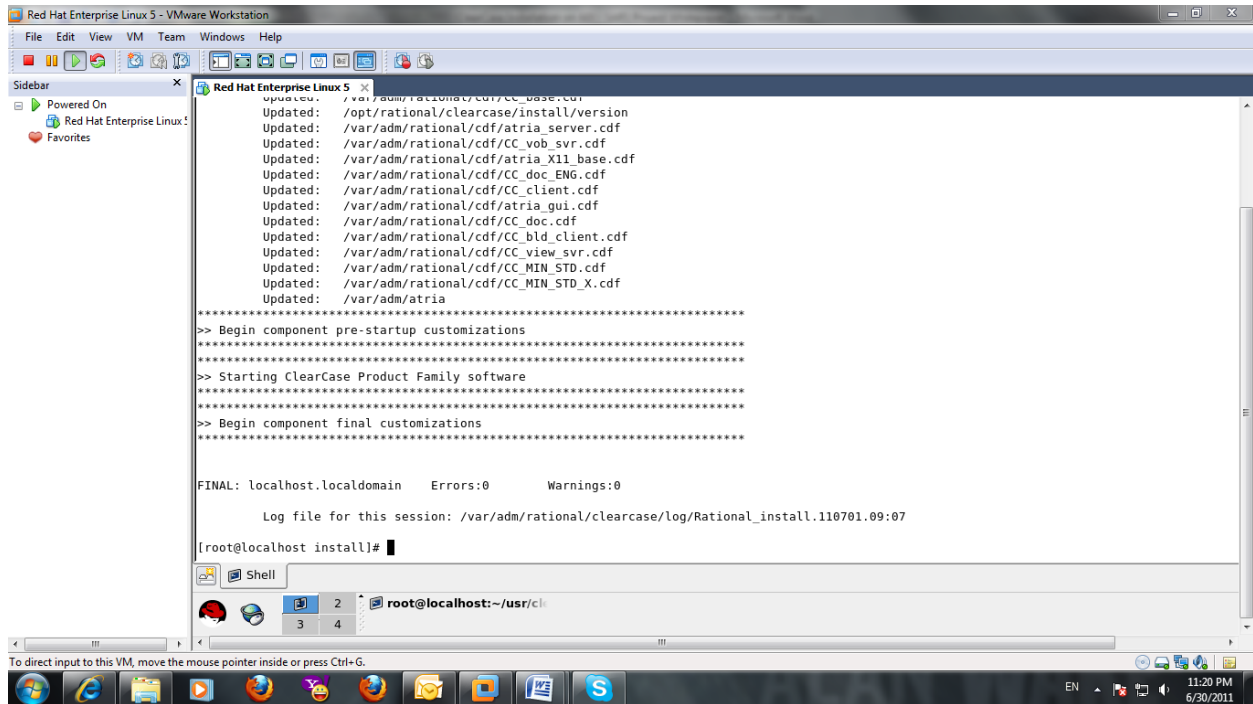


Installing Rational ClearCase on a Linux OS (Linux 5.3)



```
Red Hat Enterprise Linux 5 - VMware Workstation
File Edit View VM Team Windows Help
Sidebar
  x Red Hat Enterprise Linux 5
    x
    Updated: /var/adm/rational/cdf/CC_base.cdf
    Updated: /opt/rational/clearcase/install/version
    Updated: /var/adm/rational/cdf/atria_server.cdf
    Updated: /var/adm/rational/cdf/CC_vob_svr.cdf
    Updated: /var/adm/rational/cdf/atria_X11_base.cdf
    Updated: /var/adm/rational/cdf/CC_doc_ENG.cdf
    Updated: /var/adm/rational/cdf/CC_client.cdf
    Updated: /var/adm/rational/cdf/atria_gui.cdf
    Updated: /var/adm/rational/cdf/CC_doc.cdf
    Updated: /var/adm/rational/cdf/CC_bld_client.cdf
    Updated: /var/adm/rational/cdf/CC_view_svr.cdf
    Updated: /var/adm/rational/cdf/CC_MIN_STD.cdf
    Updated: /var/adm/rational/cdf/CC_MIN_STD_X.cdf
    Updated: /var/adm/atria
    *****
    >> Begin component pre-startup customizations
    *****
    >> Starting ClearCase Product Family software
    *****
    >> Begin component final customizations
    *****

FINAL: localhost.localdomain  Errors:0  Warnings:0

  Log file for this session: /var/adm/rational/clearcase/log/Rational_install.110701.09:07

[root@localhost install]#
```

After unzipping and extracting the gzip and tar packages in the folder `/root/usr/clearcase_rls/` we apply the required ClearCase package 7.0.0.9-RATL-RCC.linux_x86. This process includes the following steps.

Warning: We must create the packages folder instead of using the patches folder that already exists in the original ClearCase installation package and is located at `/root/usr/clearcase__rls/7.0.0/linux_x86/clearcase/install/patches`.

1. CREATE A PATCH SUBDIRECTORY

Create a 'patches' subdirectory in the release area to be

patched. Used "root" as login, a super user rights might be needed for this task.

```
# mkdir /usr/clearcase_rls/7.0.0.0/linux_x86/clearcase/patches
```

Copy the *.tar.gz file into this directory

```
# cp -p ... /usr/clearcase_rls/7.0.0.0/linux_x86/clearcase/patches/7.0.0.9-RATL-RCC.linux_x86.tar.gz
```

2. EXTRACT THE PATCH

Change directory to the 'patches' directory that we have created in step 1.

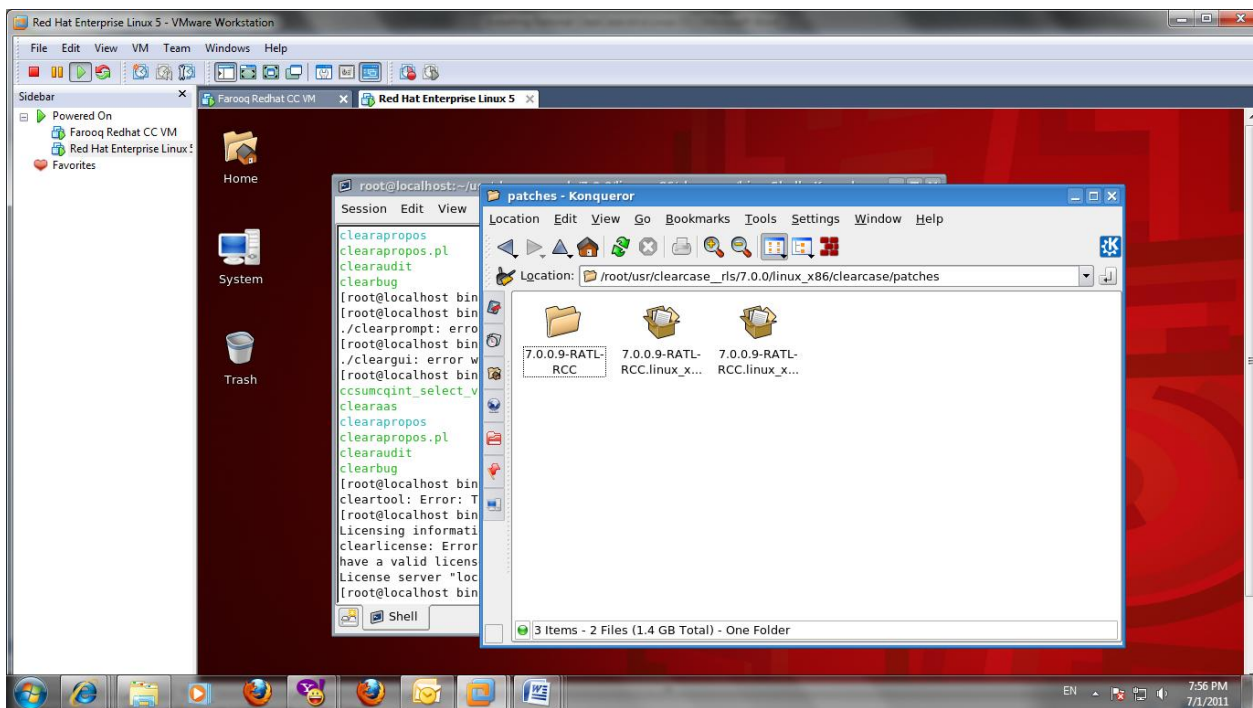
```
# cd /usr/clearcase_rls/7.0.0.0/linux_x86/clearcase/patches
```

Extract the patch using the gzip and tar commands.

```
# /opt/rational/clearcase/etc/ccgzip -d 7.0.0.9-RATL-RCC.linux_x86.tar.gz
```

```
# tar -xvf 7.0.0.9-RATL-RCC.linux_x86.tar
```

This action creates a subdirectory for the patch in the 'patches' directory.



3: PATCH THE RELEASE AREA

3.1: Change directory to the 'install' subdirectory of the directory that was created when you extracted the patch.

```
# cd /usr/clearcase_rls/7.0.0.0/linux_x86/clearcase/patches/7.0.0.9-RATL-RCC/clearcase/install
```

Locate the command `apply_patch` in this directory and run the command

3.2: Apply the patch using the command:

```
# ./apply_patch
```

Once the command ran successfully will ask if you want to run `site_prep` as well?

4. Run `site_prep`.

Following are the options for running `site_prep`:

- 1 - Run `site_prep` with no (or minimal) user interaction. (chosen, and is also the default option)
- 2 - Run `site_prep` with full user interaction.
- 3 - Exit; Run `site_prep` at a later time.

This is how the patch was installed for ClearCase 7.0 on Linux 5.3. After applying the patch we change the dir to install of the original ClearCase Installation directories at the following path

```
/root/usr/clearcase__rls/7.0.0/linux_x86/clearcase/install
```

Checked whether the `install_release` command is present and ran the command

The resulting log file is attached to see the options selected during installation

```
/var/adm/rational/clearcase/log/Rational_install.110701.09:07
```

```
Model of installation>>      User specified:Install model:standard
```

```
User specified:Install into: /opt/rational
```

```
User specified:Release area pathname:/root/usr/clearcase__rls/7.0.0/linux_x86
```

```
*10 : ClearCase Minimal Developer Installation
```

```
User specified:ClearCase (Atria) Licensing License server host is localhost
```

```
User specified:Registry host is localhost
```

```
User specified:Registry backup host(s): localhost
```

```
User specified:Registry region: localhost
```

```
User specified:Rebuild mvfs module: no
```

ClearCase (Atria) Licensing License server host is localhost

Summary:

Install into: /opt/rational

Install method:local

Install model:standard

Rebuild mvfs module: no

Registry backup host(s): localhost

Registry host is localhost

Registry region: localhost

Release area pathname:/root/usr/clearcase__rls/7.0.0/linux_x86

>> Begin component pre-startup customizations

>> Starting ClearCase Product Family software

>> Begin component final customizations

FINAL: localhost.localdomain Errors:0Warnings:0