

# ClearCase Installation on Windows

## Scope

Installation of IBM Rational ClearCase on Windows Operating System.

## Rational ClearCase host types

Any host on which a VOB or view is created is a server host, whereas, a client is a computer on which a Rational ClearCase user works, typically using one or more views to access VOBs on servers. Some hosts may be dedicated servers on which client software is rarely used.

Registry Server host stores access-path information for all the VOBs and views in the network. Rational ClearCase client and server programs on all hosts communicate with the registry server when accessing Rational ClearCase data.

Install Rational ClearCase on these hosts in the following order:

- License server host
- Registry server host
- Server hosts
- Client computers

## Internet Explorer Requirement

For Rational ClearCase to function correctly we need Internet Explorer Version 6 Service Pack 1 (SP1) or later.

## Operating System Requirements

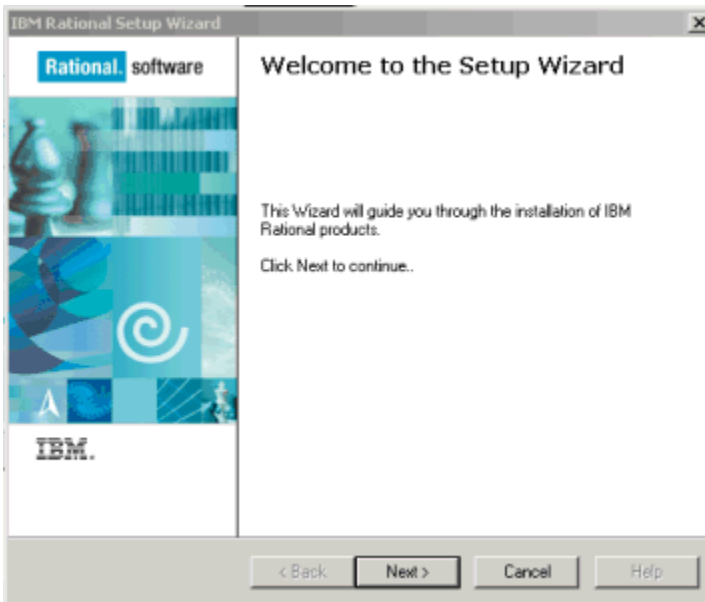
Windows Server 2003 R2 is supported as of version 7.0.1 (for further OS requirements refer to <https://www-304.ibm.com/support/docview.wss?uid=swg21239315#windows>)

## Installation:

IBM Rational LaunchPad will appear as the installation starts. Click the option 'Install IBM Rational ClearCase'.



Welcome Screen will appear. Click Next.



The IBM Setup wizard provides two deployment methods.

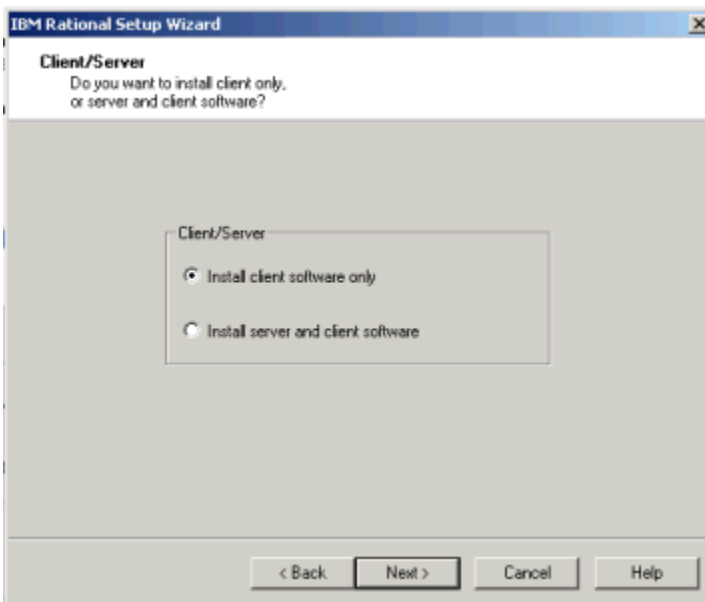
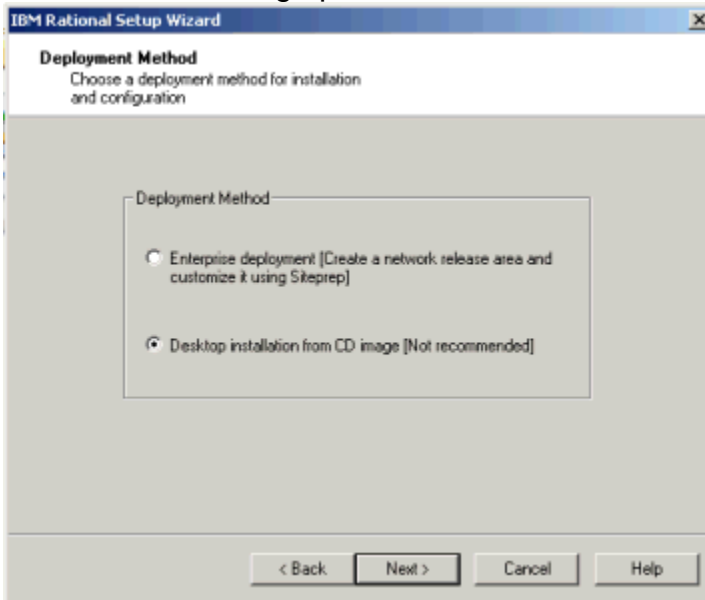
**Enterprise deployment.** Select this option to create and customize a network release area. You can customize the release area by using the Configure tool. A customized release area enables users to install pre-set configurations of IBM products from the release area.

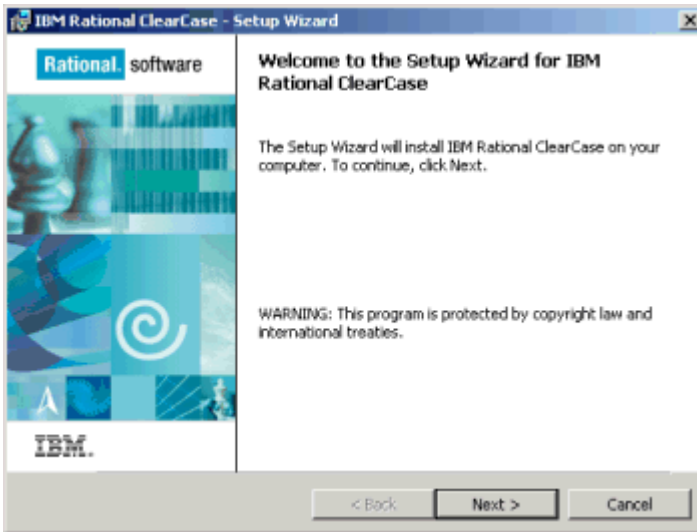
**Desktop Installation From CD Image.** Select this option to install the product directly from the IBM installation CD onto your desktop.

**Warning:** Desktop Installation from CD Image is not recommended for setting up a Rational ClearCase production installation.

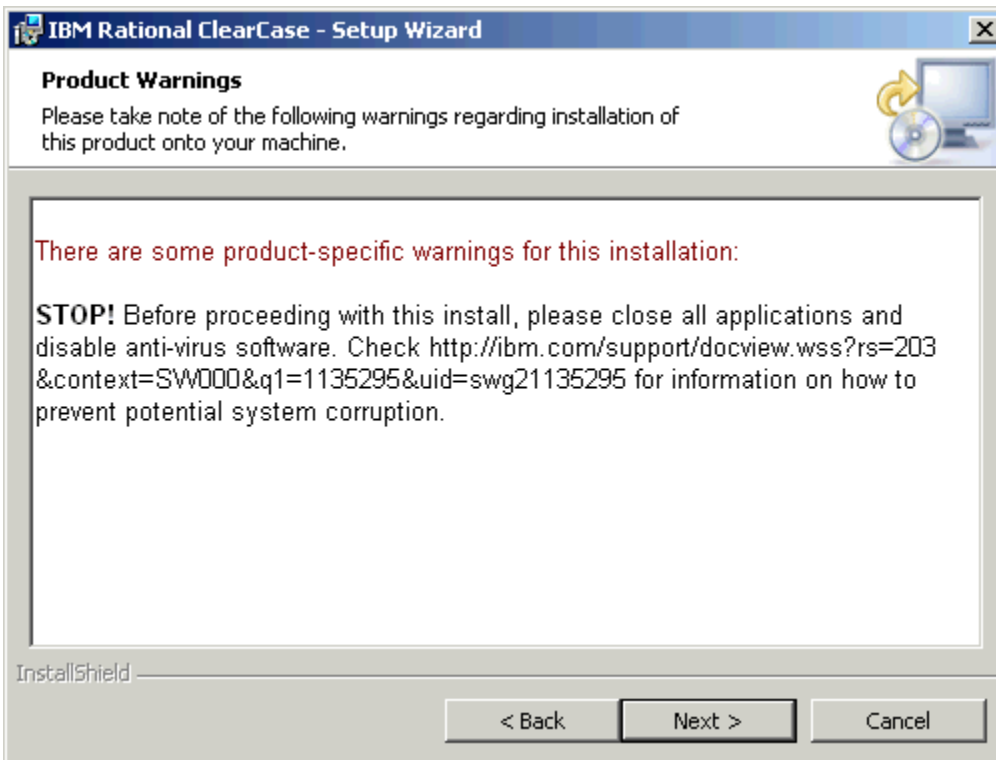
For Desktop Installation follow the steps below.

Select **Desktop Installation From CD Image** to get the following screens and choose the following options:



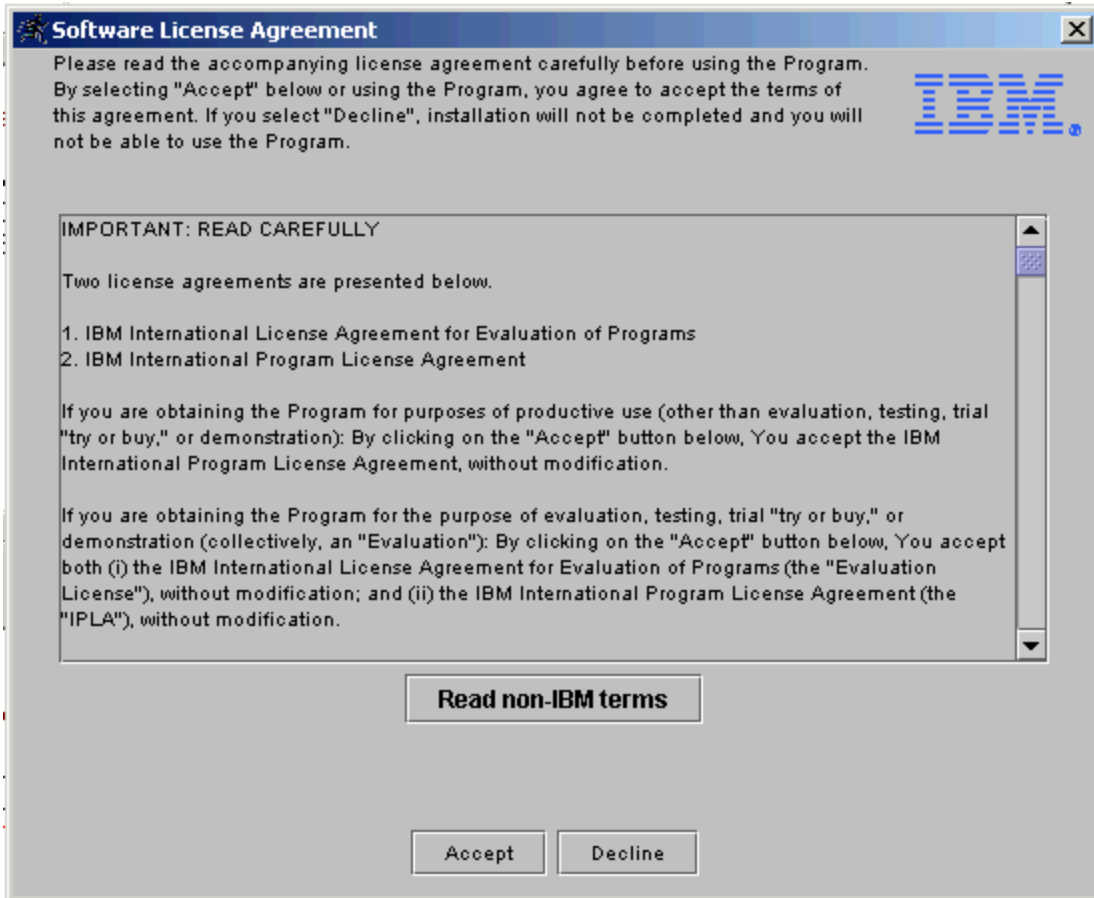


Click Next, page showing product specific warnings will appear.

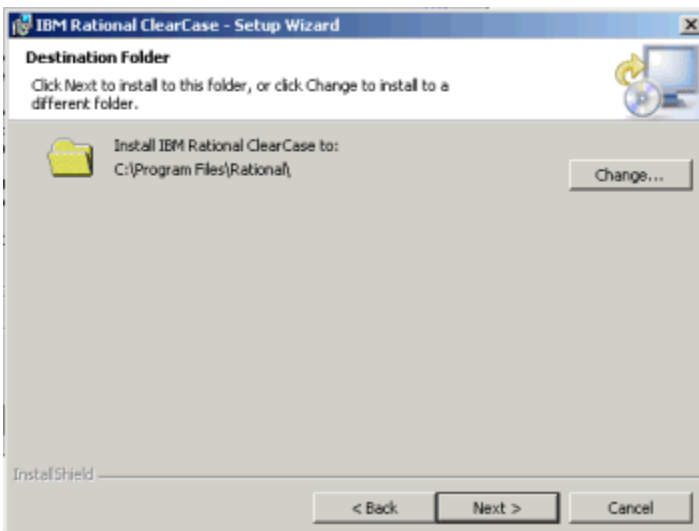


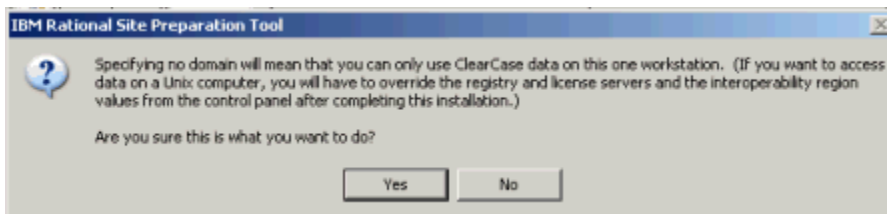
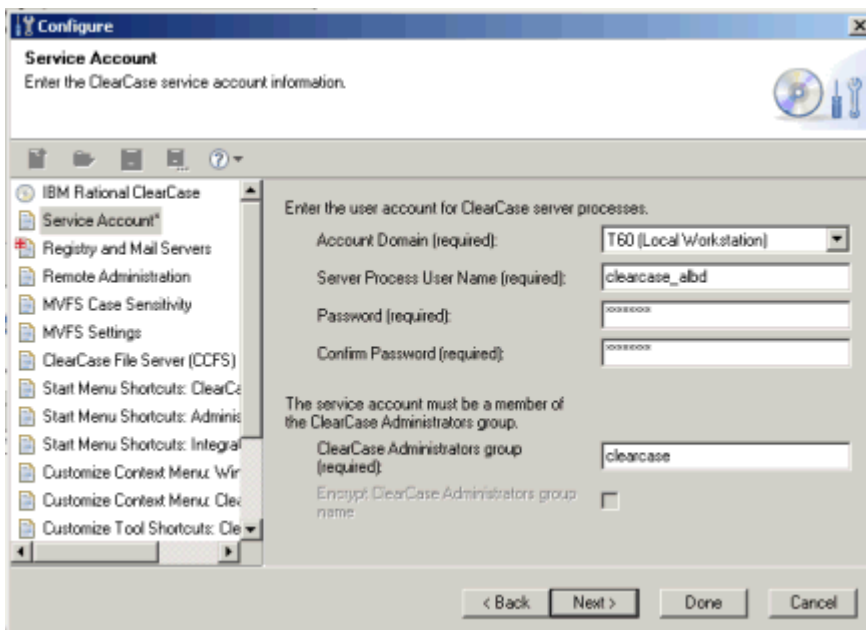
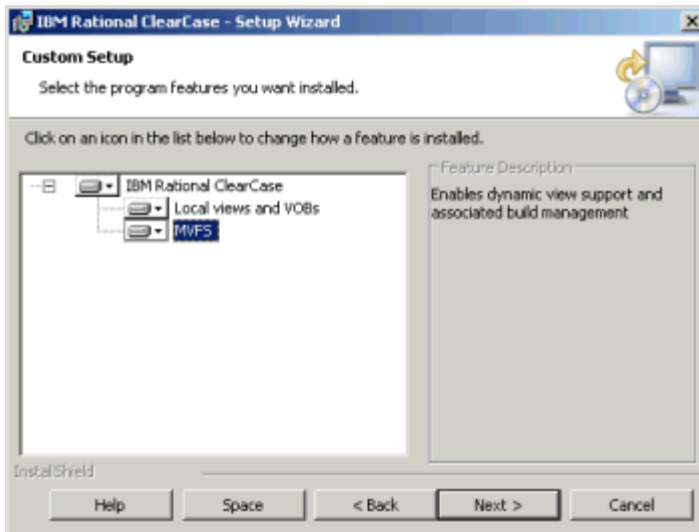
**Warning:** Before proceeding with this install, please close all applications and disable anti-virus software. Moreover, for information on how to prevent potential system corruption visit <http://ibm.com/support/docview.wss?rs=203&context=SW000&q1=1135295&uid=swg21135295>

Accept the License Agreement.



The default installation folder will be shown in the next screen, to change it press change else click *Next*

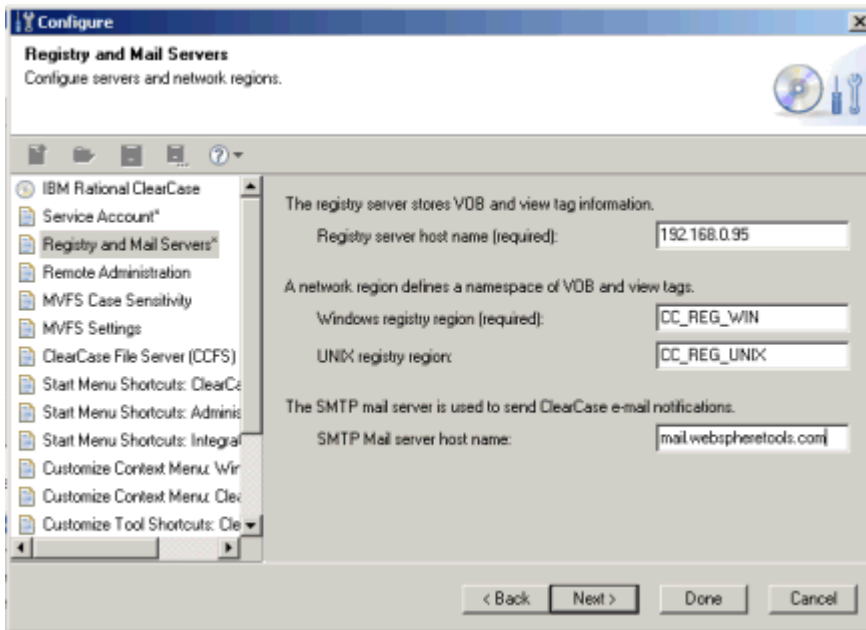




Click Yes

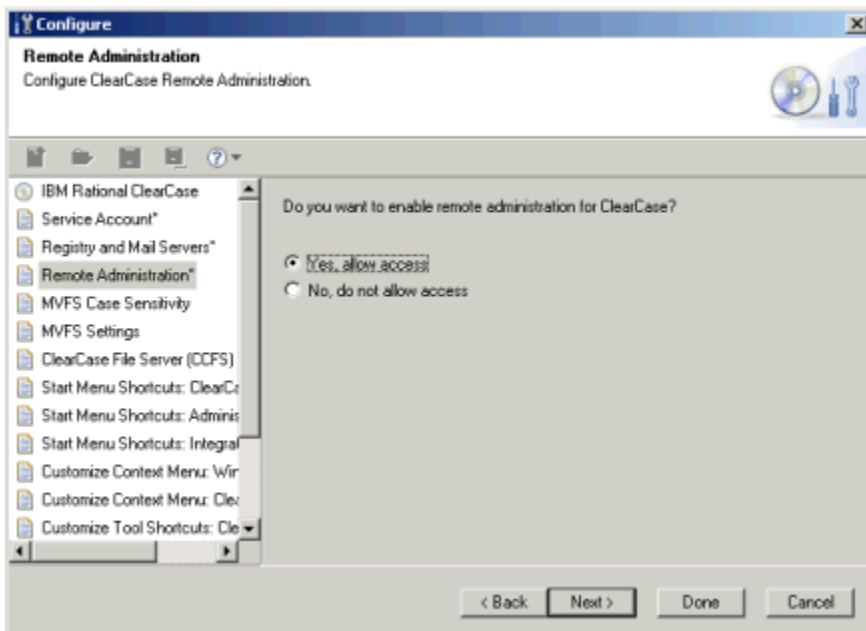
### Configure Registry and Mail Server

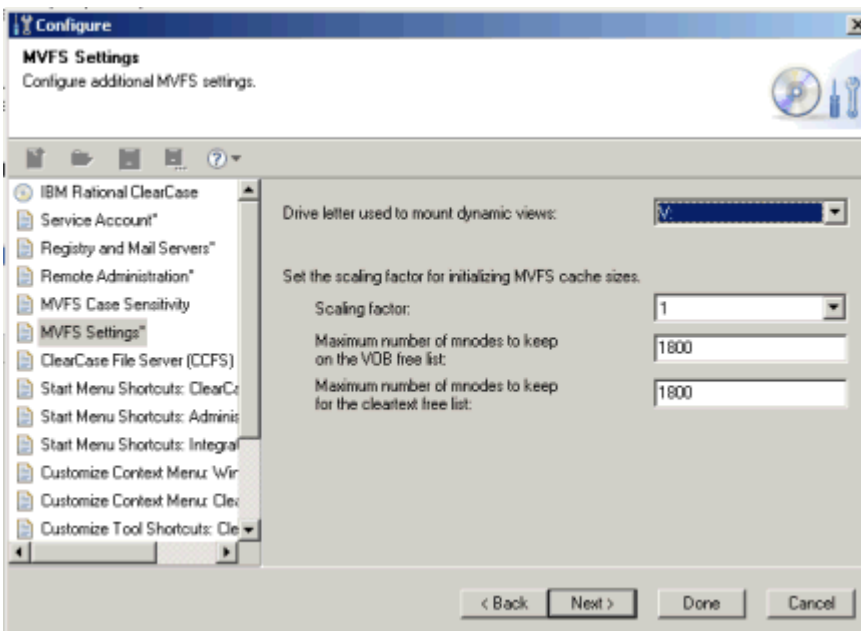
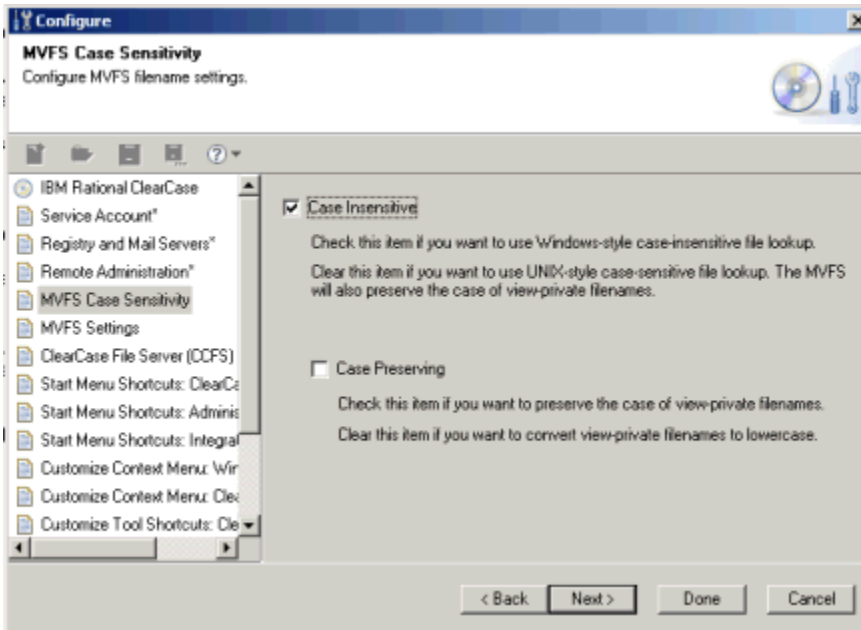
The following screen used CC\_REG\_WIN for windows registry name and CC\_REG\_UNIX as created in Linux Redhat 4 Cleacase install



## Remote Administration

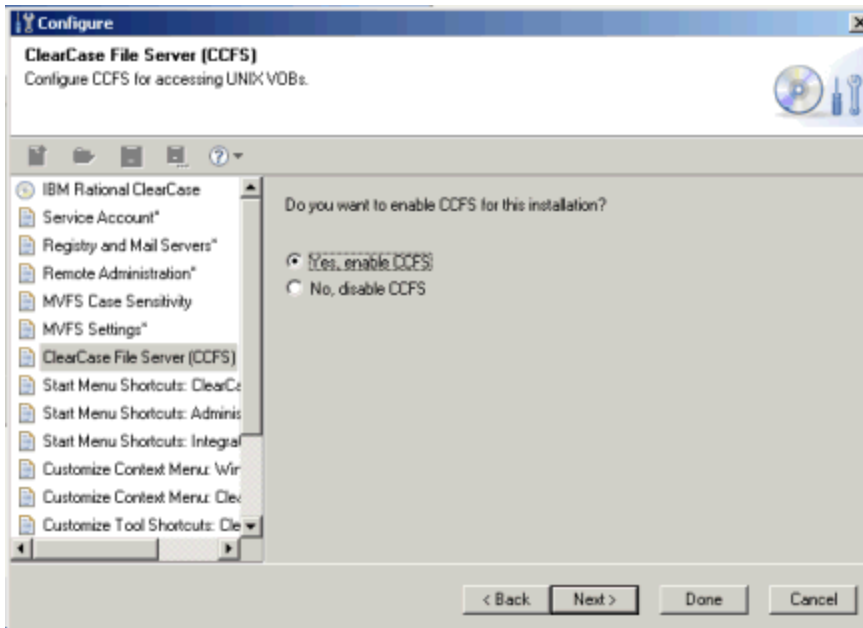
Click Next will take you to Remote Administration Screen. Choose Yes, Allow Access (if you want to enable remote administration for ClearCase). Enabling Rational ClearCase Remote Administration allows you to change Rational ClearCase properties on your computer from another computer by using Rational ClearCase administration tools such as the Rational ClearCase Administration Console.





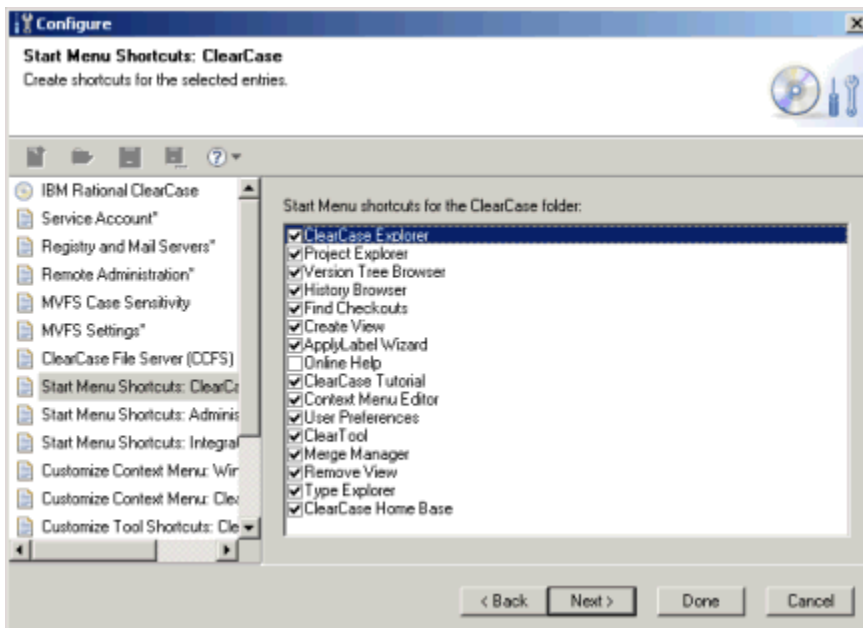
## ClearCase File Server

To enable CCFS select yes



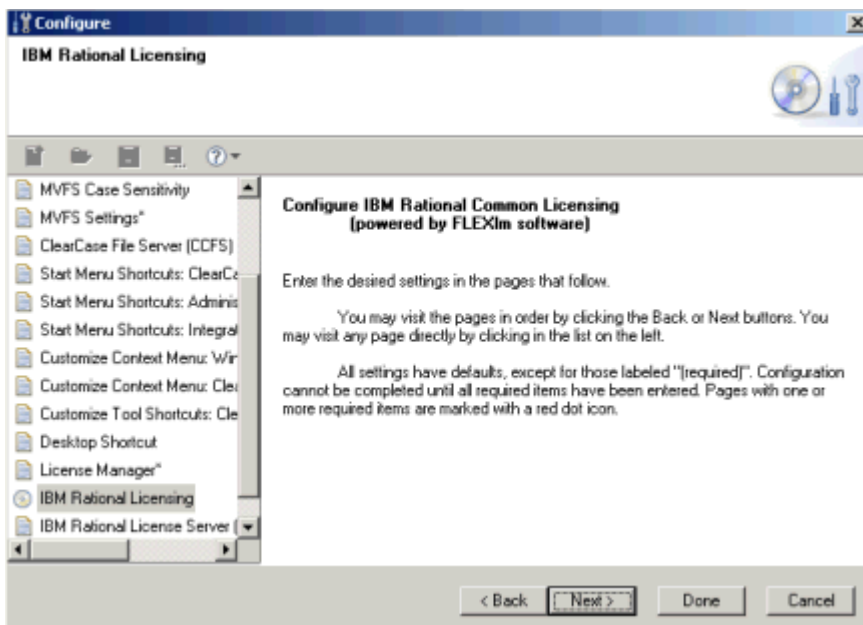
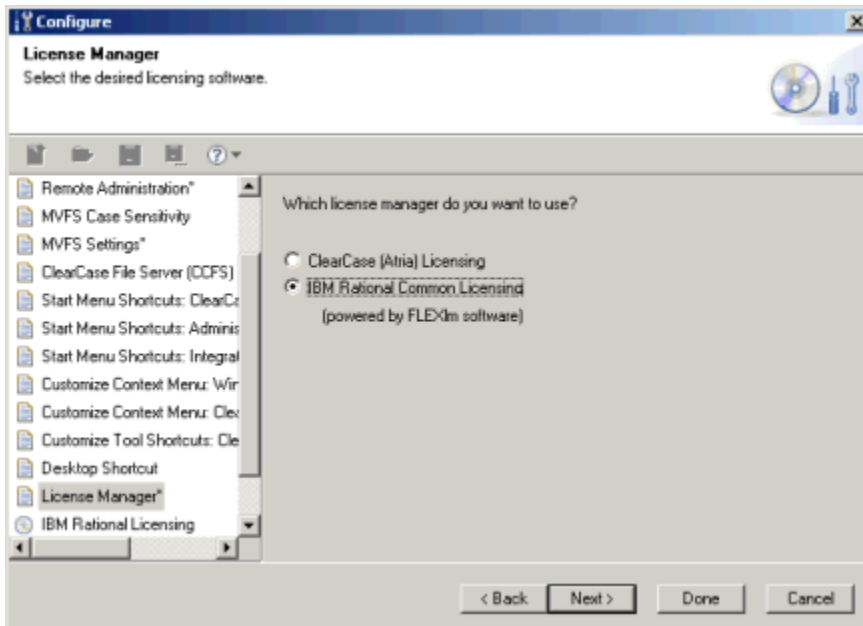
## Start Menu, Context Menu, and Windows Shortcut Options

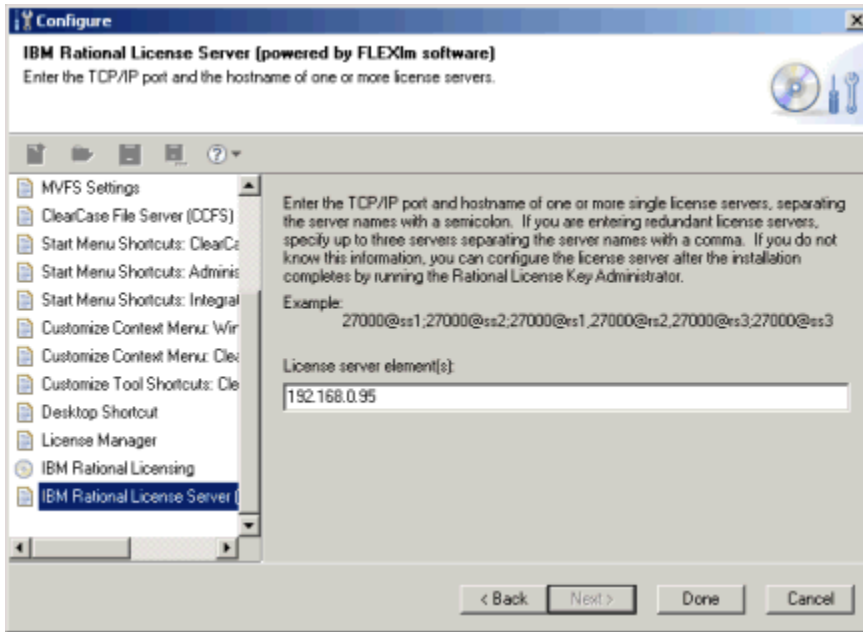
The next few steps of installation are related to options that will appear on ClearCase folders, and shortcuts that will be created. Use either default options or choose according to your respective needs.



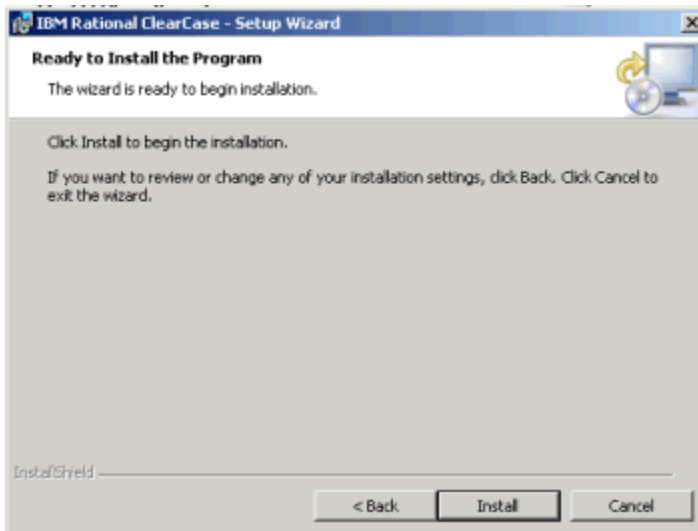
## Licensing

Next screen ask to choose about License Manager. In the following screen IBM Rational Common Licensing is used. You can use either ClearCase Licensing(formerly known as Atria licensing) or Rational Common Licensing (powered by FLEXlm software) to allocate licenses for Rational ClearCase version 7.0





Click Done to move on to the installation action screen and click Install.



The installation will ask to restart the computer during installation, once done the following screen will appear

